

---

---

---

---

---

---

---



**Mission Accomplished:  
Closing the Loop  
on Curricular Reform**

Higher Learning Commission  
Annual Conference  
Sunday, April 1, 2012  
9:30 a.m.



---

---

---

---

---

---

---

## Team Members

- Dr. Richard Helldobler, Vice-President, Academic Affairs
- Dr. Scott Beard, Dean, Graduate Studies and Continuing Education & HLC Self-Study Co-Chair
- Dr. Sylvia Shurbutt, Professor of English & Chair, University Curriculum & Instruction Committee
- Dr. Larry Daily, Associate Professor of Psychology & Chair, University General Studies Committee



---

---


---

---

---


---

---



## Introduction: Strategic Planning

Dr. Richard Helldobler



---

---

---

---

---

---

---

## INTRODUCTION



---

---

---

---

---

---

---



## Strategic Planning

Pathways to becoming a  
premiere Liberal Arts  
Institution

1. Inspire Student Learning and Development
2. Optimize Potential of Faculty and Staff
3. Create a Beautiful and Welcoming Campus
4. Stimulate the Cultural and Economic Development of the Region

---

---

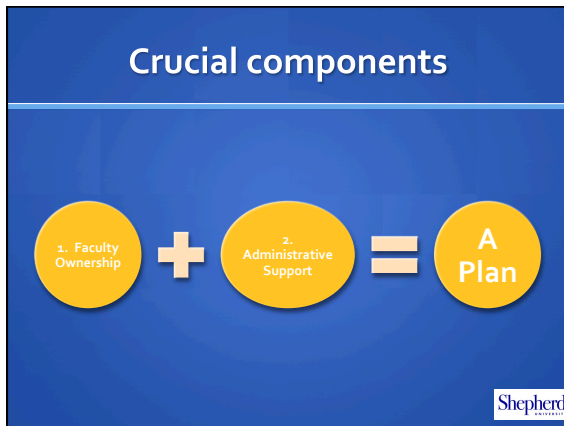
---

---

---

---

---




---

---

---

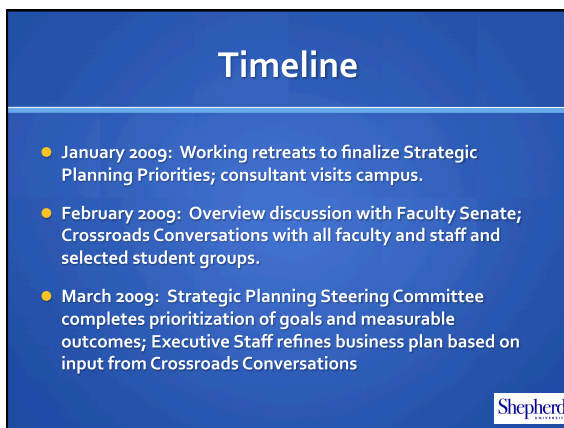
---

---

---

---

---




---

---

---

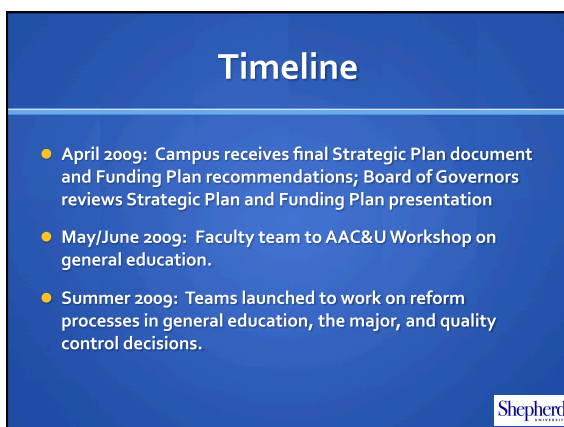
---

---

---

---

---




---

---

---

---

---

---

---

---

## Timeline

- April/May 2010: Complete reform recommendations
- August-December 2010: Governance consideration of recommendations
- January 2011: Catalog copy complete with revised curricular structure



---

---

---

---

---

---

---

## Be flexible!

- To obtain buy-in from all stakeholders, plans can change!



---

---

---

---

---

---

---



## Addressing the process through Organizational Structure

Dr. Sylvia Shurbutt



---

---

---

---

---

---

---

## Achieving the SREB "No Time to Waste" Recommendation: 120-Hr. Curriculum

### Curricular Reform Council

#### Major Reforms:

- Standardize requirements for majors in a range of 42-50 credits (except where licensing requires additional hours)
- Review required minors (15-18 hr. minors)
- Review general education courses in majors

---

---

---

---

---

---

---

---

## Achieving the SREB "No Time to Waste" Recommendation: 120-Hr. Curriculum

### Reduced Hours to Graduation: 128 to 120

#### General Education Reforms:

- Reduce requirements to 42 credits
- Suggested 30 credits first two years, 12 credits last two
- Align with LEAP standards, AAC&U
- Achieving the SREB "No Time to Waste" Recommendation: 120-Hr. Curriculum




---

---

---

---

---

---

---

---

## Faculty Ownership

1. Empower General Studies Committee (GSC)
2. Utilize Curriculum & Instruction Committee (C&I)
3. Receive Endorsement of Faculty Senate
4. Connect the Players through Curricular Reform Committee (Non-voting Committee)
5. Prepare the Faculty




---

---

---

---

---

---

---

---



## Reforming General Education

Dr. Larry Daily



---

---

---

---

---

---

---



## Curricular Reform

*Do not try to Reinvent the Wheel!*

---

---

---

---

---

---

---

## Adoption of LEAP principles

- Adoption of AAC&U's Liberal Education America's Promise-part of the the Shepherd University Strategic Plan.
- <http://www.aacu.org/leap/vision.cfm>
- The Essential Learning Outcomes helped establish rubrics for program goals, intended student outcomes, competencies, assessment and skills desired by employers

---

---

---

---

---

---

---

## Adoption of LEAP principles

- Goal No. 1: Knowledge of Human Cultures and the Physical and Natural World
- Goal No. 2: Intellectual and Practical Skills throughout the Curriculum
- Goal No. 3: Personal and Social Responsibility
- Goal No. 4: Integrative Learning

---

---

---

---

---

---

---

## Unavoidable issues:

1. Reduction of GS credit hours means compromise; compromise means some departments suffer losses. By the same token, all programs on campus have the ability to make proposals to this flexible framework.
2. Compromise also means students gain with new core curriculum requirements such as writing- intensive courses, universal first-year experiences and capstones in all majors.




---

---

---

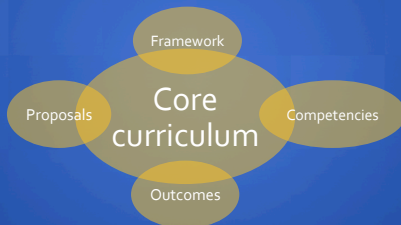
---

---

---

---

## Process




---

---

---

---

---

---

---



<p><b>2011-2012 Core Curriculum</b></p> <p><i>See course lists for Core requirements in Fine Arts and The Blues</i></p>	
<p><b>THE CORE // should No take in the first two years.</b></p>	
<p><b>MATHEMATICS (6) (4 = required)</b></p> <p><i>Placement. Select one of assistance from your advisor</i></p> <ul style="list-style-type: none"> <li>• MATH 20A &amp; 20B Fundamental Math I &amp; II</li> <li>• MATH 105 Fund of Mathematics</li> <li>• MATH 108 College Algebra</li> <li>• MATH 109 Pre-Calculus</li> <li>• MATH 134 Finite Mathematics</li> <li>• MATH 150 Discrete Structures</li> <li>• MATH 205 Calculus/Applications</li> <li>• MATH 207 Calculus I</li> <li>• MATH 214 Statistics</li> </ul>	<p><b>SCIENCES (10) (6 = required)</b></p> <p><i>Select one of assistance from your advisor</i></p> <ul style="list-style-type: none"> <li>• BIOL 101 and 102 General Biology I &amp; II</li> <li>• BIOL 208 and 209 Plants or Organisms</li> <li>• CHEM 101, 105, and 102, 105, Chemistry I &amp; Society I &amp; II</li> <li>• CHEM 120, 126, and 122, 126, College Chemistry I &amp; II</li> <li>• CHEM 201, 203, and 209, General Chemistry I &amp; II</li> <li>• GEO 101 and 102 Astronomy I &amp; II</li> <li>• GEO 103 and 104 General Physical Science I &amp; II</li> <li>• PHYS 201, 202 and 202, 203, College Physics I &amp; II</li> <li>• PHYS 221, 223 and 222, 223, General Physics I &amp; II</li> </ul>
<p><b>WRITING ENGLISH (4=7 credits)</b></p> <p><i>Placement. Select one of assistance from your advisor</i></p> <ul style="list-style-type: none"> <li>• ENG 102 &amp; 103 Basic Academic Writing I &amp; II</li> <li>• ENG 102 (Non-Resident English)</li> </ul> <p><i>Select one of assistance from your advisor</i></p> <ul style="list-style-type: none"> <li>• ENG 102, 102 Writing for Arts &amp; Plans</li> <li>• ENG 102, 102 Writing for Social Sciences</li> <li>• ENG 104, 104 Science &amp; Tech Writing</li> </ul> <p>All students must achieve at "C" or better in each of these courses.</p>	<p><b>HISTORY (6 credits)</b></p> <ul style="list-style-type: none"> <li>• HIST 100-His Civ: Asian Traditions**</li> <li>• HIST 104-His Civ: Ancient World*</li> <li>• HIST 106-His Civ: Early Modern*</li> <li>• HIST 108-His Civ: Modern World*</li> </ul> <p>* See whether HST may be used to help to satisfy both the U.S.-American History and The Two-Hemisphere requirement.</p>
<p><b>FIRST YEAR EXPERIENCE (FY) (minimum 1 credit)</b></p> <p><i>Satisfying FYE requirements is Departmental Requirement. Students who do not participate from your advisor</i></p> <p><i>Students who graduate without having completed a first year experience program will receive a warning letter from their advisor. Students who do not complete this requirement will be required to take additional classes during the next semester until they have completed the first year experience program.</i></p>	
<p><b>FYEN 101</b> Freshman Seminar</p> <p><b>FYEN 102</b> Interest Group</p> <p><b>FYEN 103</b> No Liberal Arts Study</p>	<p><b>ART 140</b> <b>BOL 150</b> <b>CIS 100</b> <b>EDUC 110</b></p> <p><b>ENGH 101</b> <b>ENGH 101L</b> <b>MATH 100</b> <b>MUSIC 100</b></p> <p><b>NURS 101</b> <b>PSPC 101 (not open to freshmen)</b> <b>PHYS 100</b> <b>SCNIE 101</b></p>

[illegible]

**Connecting the  
reform process to  
the Five Criteria  
for Accreditation**

**Dr. Scott Beard**

**Shepherd**  
UNIVERSITY



## Mission statement

- Shepherd University, a West Virginia public liberal arts university, is a diverse community of learners and a gateway to the world of opportunities and ideas.
- We are the regional center for academic, cultural, and economic opportunity. Our mission of service succeeds because we are dedicated to our core values: learning, engagement, integrity, accessibility, and community.

---

---

---

---

---

---

---

---

## The Five Criteria

- **Criterion One: Mission & Integrity**
  - Curricular reform met the goals of our mission and vision by focusing on student learning, addressing learning outcomes and curricula with global competencies, and by operating with integrity.
- **Criterion Two: Preparing for the Future**
  - Addressed strategic priorities such as student learning and investment in full-time faculty
  - Offered an opportunity for savings over time
  - Increased graduation rates and student retention.

---

---

---

---

---

---

---

---

## What are the financial benefits of Academic reform to Shepherd University?

Part time faculty savings: \$159,344			
Current Status		Proposed Reductions	
Full time faculty: 116		Full time faculty: 116	
Credit hours:	57,032	Credit hours:	57,032
Average hours	491.66	Average hours	491.66
Part time faculty: 198		Part time faculty: 166	
Credit hours:	40,209	Credit hours:	33,791
Average hours:	203.08	Average hours:	203.08




---

---

---

---

---

---

---

---

## The Five Criteria

- Criterion Three: Student Learning
  - Skills for lifelong learning.
  - Increased engagement and satisfaction.
  - A curriculum that promotes more "ownership" by students.
  - Something unique to their institution.
- Criterion Four: Knowledge
  - More resources for full-time faculty and professional development.
  - More opportunities for innovative courses and delivery models.
  - Previously mentioned curricular reform to general education.
  - Development of policies that use knowledge responsibly.

---

---

---

---

---

---

---

## What are the benefits to students?

1. More Focused, Streamlined Curricula
2. Better Student Advisement
3. Clearer pathway to a more timely graduation (4 years!)
4. Cost Savings to Students (and parents!)
5. Student Retention




---

---

---

---

---

---

---

## The Five Criteria

- Criterion Five: Student Engagement
  - Historically, a strong area for our institution.
  - Students with clearer pathways to succeed in their classes and graduate are more likely to become involved in campus life.
  - Engage students from the beginning!
- Student Leadership Through Engagement
  - Intentional and Outcomes-based Programming
  - Division-wide focus on Student Learning, Engagement, Service, Success, and Satisfaction
  - Collaborative Partnerships with University Programmers\* Service to the Shepherd Community

---

---

---

---

---

---

---

## Questions?

- Self-study website:  
<http://www.shepherd.edu/accreditation/self-study/>
- Contact Information:
  - Dr. Richard Helldobler: [rhelldob@shepherd.edu](mailto:rhelldob@shepherd.edu)
  - Dr. Scott Beard: [sbeard@shepherd.edu](mailto:sbeard@shepherd.edu)
  - Dr. Sylvia Shurbutt: [sshurbut@shepherd.edu](mailto:sshurbut@shepherd.edu)
  - Dr. Larry Daily: [ldaily@shepherd.edu](mailto:ldaily@shepherd.edu)

---

---

---

---

---

---

---



---

---

---

---

---

---

---